



Phoenix

Direct to Fabric
Comprehensive Solution

Connecting Smart Printing

Pioneering the Digital Era of Textile Printing

Shenzhen HOMER Textile Tech Co.,Ltd.

www.hanglorygroup.com

Add: No. 28, Gaoke Avenue, Baolong Subdistrict, Longgang District, Shenzhen, China (HanGlory Tower)

Tel: (+86)0755-2308 0896 **Fax:** (+86)0755-2321 7841 **E-mail:** info@hanglorygroup.com

Note: The above technical parameters are subject to change without prior notice, and are subject to actual equipment.

V1.0/2025



Phoenix Direct-to-Fabric Series

—Phoenix 180X

Optional Models: Phoenix 1824 / Phoenix 1832 / Phoenix 1864

Customized Solutions: Can Be Customized for Larger Width Models Based on Client Needs

Multiple Printhead Solutions: Circulating Printheads & Non - circulating Printheads (Optional)

Phoenix 180X Series Adapts to Maximum 1.8m Print Width Demand

X Represents Printhead Configuration: 24 / 32 / 64 (Full Configuration)

Phoenix 1864

* 1.8m without feathering

Unprecedented surging productivity,
witnessing the new performance of direct injection printing

64 Max. No. printhead	4-8 Color Mode	1800 mm Max. Print Width	1850 mm Max. Media Width
---------------------------------	--------------------------	------------------------------------	------------------------------------

Resolution	508*600 dpi (1pass)	600*600 dpi (1pass)	508*1200 dpi (2pass)	600*1200 dpi (2pass)
Max. Print Speed Non-Circulating Printhead	1919 m ² /hr	1638 m ² /hr	1085 m ² /hr	913 m ² /hr
	1066 m/hr	910 m/hr	603 m/hr	507 m/hr
Max. Print Speed Circulating Printhead	2102 m ² /hr	1883 m ² /hr	1217 m ² /hr	1062 m ² /hr
	1167 m/hr	1046 m/hr	676 m/hr	590 m/hr

Phoenix 1824

* 1.8m without feathering

Mature digital coating printing solutions to stand out in the color competition

24 Max. No. Printhead	8 Color Mode	1800 mm Max. Print Width	1850 mm Max. Media Width
---------------------------------	------------------------	------------------------------------	------------------------------------

Resolution	508*600 dpi (1pass)	600*600 dpi (1pass)	508*1200 dpi (2pass)	600*1200 dpi (2pass)	600*1800 dpi (3pass)	600*2400 dpi (4pass)
Max. Print Speed	668 m ² /hr	585 m ² /hr	384 m ² /hr	329 m ² /hr	236 m ² /hr	177 m ² /hr
	371 m/hr	325 m/hr	213 m/hr	183 m/hr	131 m/hr	98 m/hr

Phoenix 1832

* 1.8m without feathering

Stable and continuous mass production,
creating an industrialized digital direct injection “expansion weapon”

32 Max. No. Printhead	4-8 Color Mode	1800 mm Max. Print Width	1850 mm Max. Media Width
---------------------------------	--------------------------	------------------------------------	------------------------------------

Resolution	400*600 dpi (1pass)	508*600 dpi (1pass)	600*600 dpi (1pass)	400*1200 dpi (2pass)	508*1200 dpi (2pass)	600*1200 dpi (2pass)
Max. Print Speed	1247 m ² /hr	1029 m ² /hr	864 m ² /hr	682 m ² /hr	574 m ² /hr	470 m ² /hr
	693 m/hr	572 m/hr	480 m/hr	379 m/hr	319 m/hr	261 m/hr



*The diagrams provided depict the exterior renderings of Phoenix 1824, Phoenix 1832 and Phoenix 2732 .

Phoenix Direct-to-Fabric Series

—Phoenix 270X / 320X

Optional Models: Phoenix 2732 / Phoenix 2764 / Phoenix 3264

Customized Solutions: Can Be Customized for Larger Width Models Based on Client Needs
 Multiple Printhead Solutions: Circulating Printheads & Non - circulating Printheads (Optional)
 Phoenix 270X Series Adapts to Maximum 2.6m Print Width Demand
 Phoenix 320X Series Adapts to Maximum 3.2m Print Width Demand
 X Represents Printhead Configuration: 32 / 64 (Full Configuration)



*The diagrams provided depict the exterior renderings of Phoenix 1864, Phoenix 2764 and Phoenix 3264 .

Phoenix 3264

* 3.2 m without feathering

Capable of larger formats, higher yields, and more scenarios

64 Max. No. printhead	4-8 Color mode	3200 mm Max. Print Width	3250 mm Max. Media Width
---------------------------------	--------------------------	------------------------------------	------------------------------------

Resolution	508*600 dpi (1pass)	600*600 dpi (1pass)	508*1200 dpi (2pass)	600*1200 dpi (2pass)
Max. Print Speed	2434 m ² /hr 760 m/hr	2068 m ² /hr 646 m/hr	1345 m ² /hr 420 m/hr	1122 m ² /hr 350 m/hr

Phoenix 2764

* 2.6 m without feathering

Large-format digital direct printing “mass production tool”

64 Max. No. printhead	4-8 Color mode	2600 mm Max. Print Width	2650 mm Max. Media Width
---------------------------------	--------------------------	------------------------------------	------------------------------------

Resolution	508*600 dpi (1pass)	600*600 dpi (1pass)	508*1200 dpi (2pass)	600*1200 dpi (2pass)
Max. Print Speed Non-Circulating Printhead	2236 m ² /hr 860 m/hr	1898 m ² /hr 730 m/hr	1251 m ² /hr 481 m/hr	1043 m ² /hr 401 m/hr
Max. Print Speed Circulating Printhead	2612 m ² /hr 1004 m/hr	2319 m ² /hr 892 m/hr	1486 m ² /hr 571 m/hr	1300 m ² /hr 500 m/hr

Phoenix 2732

* 2.6 m without feathering

Large-format high-speed direct printing solution

32 Max. No. Printhead	4-8 Color mode	2600 mm Max. Print Width	2650 mm Max. Media Width
---------------------------------	--------------------------	------------------------------------	------------------------------------

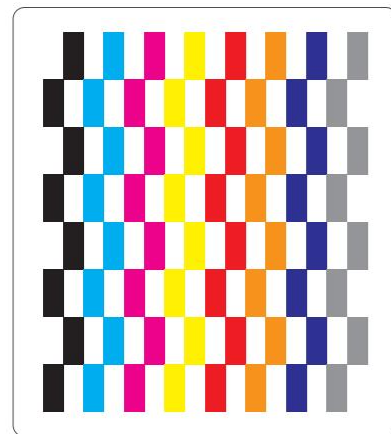
Resolution	400*600 dpi (1pass)	508*600 dpi (1pass)	600*600 dpi (1pass)	400*1200 dpi (2pass)	508*1200 dpi (2pass)	600*1200 dpi (2pass)
Max. Print Speed	1510 m ² /hr 581 m/hr	1282 m ² /hr 493 m/hr	1064 m ² /hr 409 m/hr	780 m ² /hr 300 m/hr	678 m ² /hr 261 m/hr	564 m ² /hr 217 m/hr

Phoenix Series Highlight

- **Diverse Solutions for Rich Applications**

1.8–3.2m width models, 24/32/64 industrial-grade printhead platforms.

Specialized digital printing belts for pigment reactive/acid/disperse ink direct-to-fabric solutions.



◀ Phoenix Series
64 Printheads 8 Colors Mode

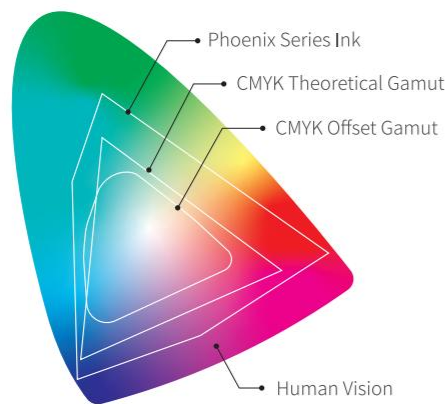


- **Delivers finer print, More ink-efficient, and More vibrant printed patterns**

Fine patterns, ink savings, vibrant colors via industrial piezoelectric printheads.

Innovative color group inkjet combinations for higher precision and color fastness.

Variable drop technology for optimized ink control and cost-efficiency.



▲ Phoenix series delivers near-perfect digital color performance





- **Smooth Material Handling**

Small roll adjustable friction passive unwinding system, ensuring smooth fabric feeding.
Heated fabric roller maintains printing flatness.

- **Unmatched Stability**

Stable fabric transport system for long-term reliability.
Linear motors + imported silent guides for low noise and smooth operation.
Peristaltic pump + automatic negative pressure + ink degassing for stable ink supply.

- **High-Efficiency Data Management**

Industrial server for high-speed print data transmission.

- **Upgraded Belt Cleaning & Drying**

Energy-efficient cleaning for ink-contaminated belts.
Rapid belt drying to keep it dry.

- **Printhead Protection System**

Anti-scratch design minimizes printhead damage, extending lifespan and reducing maintenance risks.

Phoenix 1824 | Parameters

High-speed Conveying-belt Direct to Fabric Digital Printer

PRINTING INFORMATION

Printhead	24 Heads Industrial Grade Piezoelectric Printhead					
Resolution	508*600 dpi (1pass)	600*600 dpi (1pass)	508*1200 dpi (2pass)	600*1200 dpi (2pass)	600*1800 dpi (3pass)	600*2400 dpi (4pass)
Max. Print Speed (no feathering, 1800mm)	668 m ² /hr	585 m ² /hr	384 m ² /hr	329 m ² /hr	236 m ² /hr	177 m ² /hr
	371 m/hr	325 m/hr	213 m/hr	183 m/hr	131 m/hr	98 m/hr
Color	CMYK + 4 spot colors					
Color Mode	Standard 8 colors × 3 rows					
Ink	Reactive ink, Disperse ink, Latex ink, Pigment ink, Acid ink					
Ink Capacity	15 L					

MATERIAL | WINDING | DRYING

Material Information	Max. Media Width	Max. Print Width	Applicable Media Weight
	1850 mm	1800 mm	30-450 g/m ²
Print Media	Cotton, Linen, Silk, Nylon, Polyester, Blended, etc.		
Media Infeed	Adjustable tension unwind: Φ500 mm (Std.) A type:Φ1600mm Fabric trolley Pair side feeding (optional)		
Media Outfeed	Roll Φ400 mm Fabric trolley(standard)		
Drying Method	Conveyor belt + electric heating hot air circulation dryer (optional:steam-type)		
Waste Gas Treatment	Hot air circulation,adjustable exhaust gas forcing system (exhaust gas optional)		

ELECTRICITY | AIR | WATER

Water Supply	0.6 Mpa 5 m ³ /hr
Compressed Air Supply	0.3 Mpa 1000 L/hr/set
Printer Power & Voltage	Printer: AC220V±10%, single-phase 10 A(1.7KW) 50/60 Hz Conveying-belt drying: AC220V±10%, single-phase 29 A(6.5Kw) 50/60 Hz
Dryer Voltage (optional) ^②	AC380V±10%, three-phase 31 A (16.5 KW) 50/60 Hz
Cable Requirements ^②	Printer:3*4 mm ² ,Dryer:3*6 mm ²

PEINTER ENVIRONMENT

Temperature	20~28°C(68~82°F)
Humidity	45-60%(non-condensing)

INSTALLATION | DIMENSIONS | Weight

Printer Measurement & Net Weight ^①	4656 mm*2300 mm*2277 mm(L*W*H) WT: 3.05 T
Dryer Measurement & Net Weight ^②	2850 mm*2960 mm*1730 mm(L*W*H) WT: 1.20 T
Printer Measurement with Packing & Net Weight	4850 mm*2250 mm*2250 mm(L*W*H) WT: 3.90 T
Dryer Measurement with Packing & Net Weight ^②	2280 mm*2960 mm*1730 mm(L*W*H) WT: 1.60 T
Minimum Installation Site Requirement ^③	8650 mm*7050 mm*2500 mm(L*W*H)

① No including unwind; ② optional,Single-layer dryer with 1.6m tunnel for reference only; ③ A-frame feeder is not included.

Phoenix 1832 | Parameters

High-speed Conveying-belt Direct to Fabric Digital Printer

PRINTING INFORMATION

Printhead	16/24/32 Heads Industrial Grade Piezoelectric Printhead					
Resolution	400*600 dpi (1pass)	508*600 dpi (1pass)	600*600 dpi (1pass)	400*1200 dpi (2pass)	508*1200 dpi (2pass)	600*1200 dpi (2pass)
Max. Print Speed (no feathering, 1800mm)	1247 m ² /hr	1029 m ² /hr	864 m ² /hr	682 m ² /hr	574 m ² /hr	470 m ² /hr
	693 m/hr	572 m/hr	480 m/hr	379 m/hr	319 m/hr	261 m/hr
Color	CMYK + 4 spot colors					
Color Mode	4,6,8 Colors					
Ink	Reactive ink, Disperse ink, Latex ink, Pigment ink, Acid ink					
Ink Capacity	15 L					

MATERIAL | WINDING | DRYING

Material Information	Max. Media Width	Max. Print Width	Applicable Media Weight
	1850 mm	1800 mm	30-450 g/m ²
Print Media	Cotton, Linen, Silk, Nylon, Polyester, Blended, etc.		
Media Infeed	Adjustable tension unwind: Φ500 mm (Std.) A type:Φ1600mm Fabric trolley Pair side feeding (optional)		
Media Outfeed	Roll Φ400 mm Fabric trolley(standard)		
Drying Method	Steam (standard), Electric, Hot oil, Gas, Electric + steam, Electric + Hot oil		

ELECTRICITY | AIR | WATER

Printer Voltage	AC380V±10%, three-phase 50/60 Hz
Printer Power	Nominal power: 14 kW, 26 A
Coveyor Drying Voltage	AC380V±10%, three-phase 50/60 Hz
Coveyor Drying Power	Nominal power: 13 kW, 22 A
Compressed Air Supply	0.6 MPa 5 m ³ /hr (dry,oil-free and moisture-free)
Water Supply	0.3 MPa 1000 L/hr/set
Cable Requirements	Printer: 5*6 mm ² Dryer: 5*6 mm ² , Drying control: 5*6 mm ² Electic drying: 3*2.5 mm ²

PEINTER ENVIRONMENT

Temperature	20~28°C(68~82°F)
Humidity	45-60%(non-condensing)

INSTALLATION | DIMENSIONS

Printer Measurement	4656 mm*3604 mm*2004 mm(L*W*H)
Printer Measurement with Packing	Printer: 4900 mm*2280 mm*2260 mm(L*W*H) Feeder: 2810 mm*1950 mm*2260 mm(L*W*H)
Installation Site Requirement	14000 mm*7500 mm(L*W)(Not a standard requirement and can be flexibly adjusted based on on-site conditions.)

Weight

Printer Net Weight	4.40 T
Printer Weight With Packing	5.49 T

Phoenix 1864 | Parameters

High-speed Conveying-belt Direct to Fabric Digital Printer

PRINTING INFORMATION

Printhead	32/48/56/64 Heads Industrial Grade Piezoelectric Printhead			
Resolution	508*600 dpi (1pass)	600*600 dpi (1pass)	508*1200 dpi (2pass)	600*1200 dpi (2pass)
Max. Print Speed (non-circulating printhead) (no feathering,1800mm)	1919 m ² /hr	1638 m ² /hr	1085 m ² /hr	913 m ² /hr
	1066 m/hr	910 m/hr	603 m/hr	507 m/hr
Max. Print Speed (circulating printhead) (no feathering,1800mm)	2102 m ² /hr	1883 m ² /hr	1217 m ² /hr	1062 m ² /hr
	1167 m/hr	1046 m/hr	676 m/hr	590 m/hr
Color	CMYK + 4 spot colors			
Color Mode	4,6,7,8 Colors			
Ink	Reactive ink, Disperse ink, Latex ink, Pigment ink, Acid ink			
Ink Capacity	30 L			

MATERIAL | WINDING | DRYING

Material Information	Max. Media Width	Max. Print Width	Applicable Media Weight
	1850 mm	1800 mm	30-450 g/m ²
Print Media	Cotton, Linen, Silk, Nylon, Polyester, Blended, etc.		
Media Infeed	Adjustable tension unwind: Φ500 mm (Std.) A type:Φ1600mm Fabric trolley Pair side feeding (optional)		
Media Outfeed	Roll Φ400 mm Fabric trolley(standard)		
Drying Method	Steam (standard), Electric, Hot oil, Gas, Electric + steam, Electric + Hot oil		

ELECTRICITY | AIR | WATER

Printer Voltage	AC380V±10%, three-phase 50/60 Hz
Printer Power	Nominal power: 20 kW, 32 A
Coveyor Drying Voltage	AC380V±10%, three-phase 50/60 Hz
Coveyor Drying Power	Actual power consumption: 9 kW (50°C) Nominal power: 13 kW, 22 A
Compressed Air Supply	0.6 MPa 5 m ³ /hr (dry,oil-free and moisture-free)
Water Supply	0.3 MPa 1000 L/hr/set
Cable Requirements	Printer: 5*6 mm ² Dryer: 5*6 mm ² , Drying control: 5*6 mm ² Electic drying: 3*2.5 mm ²

PEINTER ENVIRONMENT

Temperature	20~28°C(68~82°F)
Humidity	45-60%(non-condensing)

INSTALLATION | DIMENSIONS

Printer Measurement	5485 mm*5866 mm*2296 mm(L*W*H)
Printer Measurement with Packing	Printer: 5660 mm*2250 mm*2550 mm(L*W*H)
	Feeder: 2960 mm*2250 mm*2360 mm(L*W*H)
Installation Site Requirement	14000 mm*8000 mm(L*W)(Not a standard requirement and can be flexibly adjusted based on on-site conditions.)

Weight

Printer Net Weight	9.50 T
Printer Weight With Packing	10.70 T

Phoenix 2732 | Parameters

High-speed Conveying-belt Direct to Fabric Digital Printer

PRINTING INFORMATION

Printhead	16/24/32 Heads Industrial Grade Piezoelectric Printhead					
Resolution	400*600 dpi (1pass)	508*600 dpi (1pass)	600*600 dpi (1pass)	400*1200 dpi (2pass)	508*1200 dpi (2pass)	600*1200 dpi (2pass)
Max. Print Speed (no feathering, 2600mm)	1510 m ² /hr	1282 m ² /hr	1064 m ² /hr	780 m ² /hr	678 m ² /hr	564 m ² /hr
	581 m/hr	493 m/hr	409 m/hr	300 m/hr	261 m/hr	217 m/hr
Color	CMYK + 4 spot colors					
Color Mode	4,6,8 Colors					
Ink	Reactive ink, Disperse ink, Latex ink, Pigment ink, Acid ink					
Ink Capacity	15 L					

MATERIAL | WINDING | DRYING

Material Information	Max. Media Width	Max. Print Width	Applicable Media Weight
	2650 mm	2600 mm	30-450 g/m ²
Print Media	Cotton, Linen, Silk, Nylon, Polyester, Blended, etc.		
Media Infeed	Adjustable tension unwind: Φ500 mm (Std.) A type:Φ1600mm Fabric trolley Pair side feeding (optional)		
Media Outfeed	Roll Φ400 mm Fabric trolley(standard)		
Drying Method	Steam (standard), Electric, Hot oil, Gas, Electric + steam, Electric + Hot oil		

ELECTRICITY | AIR | WATER

Printer Voltage	AC380V±10%, three-phase 50/60 Hz
Printer Power	Nominal power: 14 kW, 24 A
Coveyor Drying Voltage	AC380V±10%, three-phase 50/60 Hz
Coveyor Drying Power	Nominal power: 13 kW, 22 A
Compressed Air Supply	0.6 MPa 5 m ³ /hr (dry,oil-free and moisture-free)
Water Supply	0.3 MPa 1000 L/hr/set
Cable Requirements	Printer: 5*6 mm ² Dryer: 5*6 mm ² , Drying control: 5*6 mm ² Electic drying: 3*2.5 mm ²

PEINTER ENVIRONMENT

Temperature	20~28°C(68~82°F)
Humidity	45-60%(non-condensing)

INSTALLATION | DIMENSIONS

Printer Measurement	5400 mm*3600 mm*2225 mm(L*W*H)
Printer Measurement with Packing	Printer: 5700 mm*2250 mm*2250 mm(L*W*H)
	Feeder: 3550 mm*2250 mm*2260 mm(L*W*H)
Installation Site Requirement	14000 mm*8500 mm(L*W)(Not a standard requirement and can be flexibly adjusted based on on-site conditions.)

Weight

Printer Net Weight	5.50 T
Printer Weight With Packing	6.70 T

Phoenix 2764 | Parameters

High-speed Conveying-belt Direct to Fabric Digital Printer

PRINTING INFORMATION

Printhead	32/48/56/64 Heads Industrial Grade Piezoelectric Printhead			
Print Mode	Single/Dual direction			
Resolution	508*600 dpi (1pass)	600*600 dpi (1pass)	508*1200 dpi (2pass)	600*1200 dpi (2pass)
Max. Print Speed (non-circulating printhead) (no feathering, 2600mm)	2236 m ² /hr 860 m/hr	1898 m ² /hr 730 m/hr	1251 m ² /hr 481 m/hr	1043 m ² /hr 401 m/hr
Max. Print Speed (circulating printhead) (no feathering, 2600mm)	2612 m ² /hr 1004 m/hr	2319 m ² /hr 892 m/hr	1486 m ² /hr 571 m/hr	1300 m ² /hr 500 m/hr
Color	CMYK + 4 spot colors			
Color Mode	4,6,7,8 Colors			
Ink	Reactive ink, Disperse ink, Latex ink, Pigment ink, Acid ink			
Ink Capacity	30 L			

MATERIAL | WINDING | DRYING

Material Information	Max. Media Width 2650 mm	Max. Print Width 2600 mm	Applicable Media Weight 30-450 g/m ²
Print Media	Cotton, Linen, Silk, Nylon, Polyester, Blended, etc.		
Media Infeed	Adjustable tension unwind: Φ500 mm (Std.) A type: Φ1600mm Fabric trolley Pair side feeding (optional)		
Media Outfeed	Roll Φ400 mm Fabric trolley(standard)		
Drying Method	Steam (standard), Electric, Hot oil, Gas, Electric + steam, Electric + Hot oil		

ELECTRICITY | AIR | WATER

Printer Voltage	AC380V±10%, three-phase 50/60 Hz
Printer Power	Nominal power: 20 kW, 32 A
Coveyor Drying Voltage	AC380V±10%, three-phase 50/60 Hz
Coveyor Drying Power	Actual power consumption: 9 kW (50°C) Nominal power: 15 kW, 25 A
Compressed Air Supply	0.6 MPa 5 m ³ /hr (dry, oil-free and moisture-free)
Water Supply	0.3 MPa 1000 L/hr/set
Cable Requirements	Printer: 5*6 mm ² Dryer: 5*6 mm ² , Drying control: 5*6 mm ² Electic drying: 3*2.5 mm ²

PEINTER ENVIRONMENT

Temperature	20~28°C(68~82°F)
Humidity	45-60%(non-condensing)

INSTALLATION | DIMENSIONS

Printer Measurement	6227 mm*5866 mm*2296 mm(L*W*H)
Printer Measurement with Packing	Printer: 6400 mm*2250 mm*2550 mm(L*W*H) Feeder: 3700 mm*2250 mm*2360 mm(L*W*H)

Weight

Printer Net Weight	10.8 T
Printer Weight With Packing	12.2 T

Phoenix 3264 | Parameters

High-speed Conveying-belt Direct to Fabric Digital Printer

PRINTING INFORMATION

Printhead	32/48/56/64 Heads Industrial Grade Piezoelectric Printhead			
Print Mode	Single/Dual direction			
Resolution	508*600 dpi (1pass)	600*600 dpi (1pass)	508*1200 dpi (2pass)	600*1200 dpi (2pass)
Max. Print Speed (no feathering, 3200mm)	2434 m ² /hr 760 m/hr	2068 m ² /hr 646 m/hr	1345 m ² /hr 420 m/hr	1122 m ² /hr 350 m/hr
Color	CMYK + 4 spot colors			
Color Mode	4,6,7,8 Colors			
Ink	Reactive ink, Disperse ink, Latex ink, Pigment ink, Acid ink			
Ink Capacity	30 L			

MATERIAL | WINDING | DRYING

Material Information	Max. Media Width 3250 mm	Max. Print Width 3200 mm	Applicable Media Weight 30-450 g/m ²
Print Media	Cotton, Linen, Silk, Nylon, Polyester, Blended, etc.		
Media Infeed	Adjustable tension unwind: Φ500 mm (Std.) A type: Φ1600mm Fabric trolley Pair side feeding (optional)		
Media Outfeed	Roll Φ400 mm Fabric trolley(standard)		
Drying Method	Steam (standard), Electric, Hot oil, Gas, Electric + steam, Electric + Hot oil		

ELECTRICITY | AIR | WATER

Printer Voltage	AC380V±10%, three-phase 50/60 Hz
Printer Power	Nominal power: 20 kW, 32 A
Coveyor Drying Voltage	AC380V±10%, three-phase 50/60 Hz
Coveyor Drying Power	Nominal power: 15 kW, 29 A
Compressed Air Supply	0.6 MPa 5 m ³ /hr (dry, oil-free and moisture-free)
Water Supply	0.3 MPa 1000 L/hr/set
Cable Requirements	Printer: 5*6 mm ² Dryer: 5*6 mm ² , Drying control: 5*6 mm ² Electic drying: 3*2.5 mm ²

PEINTER ENVIRONMENT

Temperature	20~28°C(68~82°F)
Humidity	45-60%(non-condensing)

INSTALLATION | DIMENSIONS

Printer Measurement	6827 mm*5850 mm*2296 mm(L*W*H)
Printer Measurement with Packing	Printer: 7000 mm*2250 mm*2540 mm(L*W*H) Feeder: 4300 mm*2250 mm*2360 mm(L*W*H)

Weight

Printer Net Weight	11.87 T
Printer Weight With Packing	13.50 T